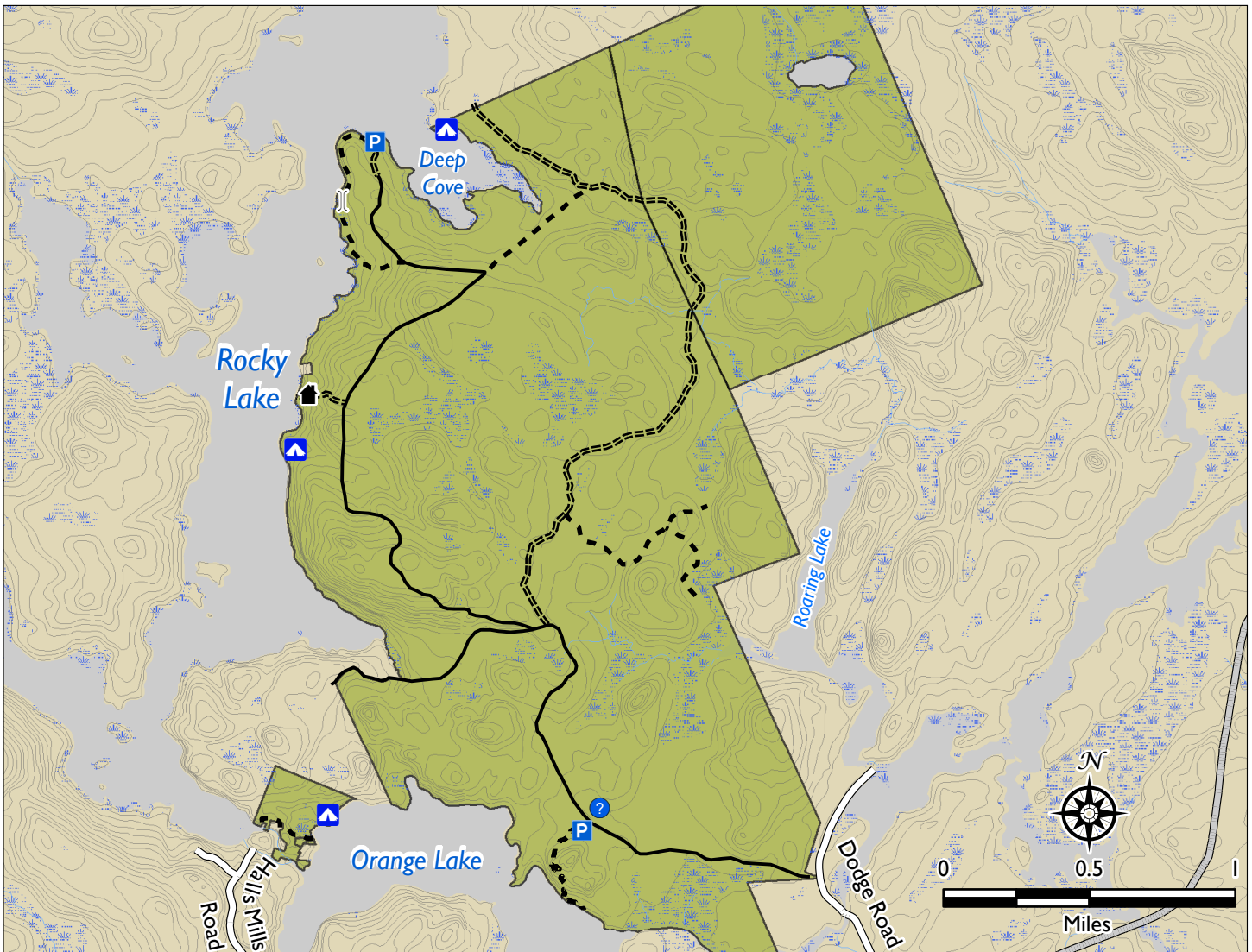


Rocky Lake

Whiting, Maine



Preserve Guidelines

- Carry out all trash
 - Including pet waste
 - Including human waste and toilet paper, unless using privy
- Fires only at designated campsites, within fire ring
 - Leave tree limbs standing, dead or alive
 - Leave no fire unattended
 - Completely extinguish all fires
- Camp at established sites
 - Free registration at mcht.org/visit-a-preserve/campsites
 - First come, first served, two night maximum
 - Shallow privy provided, please follow signs
- Leave no trace
- Please respect the privacy of preserve neighbors

Legend

- Bench
- Information Kiosk
- Parking
- Cabin
- Campsites
- Trails
- Major Roads
- Minor Roads
- 20' Contours
- Wetlands
- Preserve