



Maine Coast Heritage Trust
2002 Annual Report

Maine Coast Heritage Trust works to conserve coastal and other lands that define Maine's distinct landscape, protect its environment, sustain its outdoor traditions and promote the well-being of its people. Since 1970, MCHT has helped to protect more than 112,000 acres including valuable wildlife habitat, farm and forest land and 264 entire coastal islands.

MCHT provides conservation services to landowners, local land trusts, government agencies and communities throughout Maine.

As a membership organization, MCHT is supported by individuals committed to protecting Maine's natural beauty and resources. The Trust invites your support and involvement.

Main Office

1 Main Street, Suite 201 • Topsham, ME 04086 • 207-729-7366

Somesville Office

P.O. Box 669 • Mount Desert, ME 04660 • 207-244-5100

Aldermere Farm

70 Russell Ave. • Rockport, ME 04856 • 207-236-2739

www.mcht.org



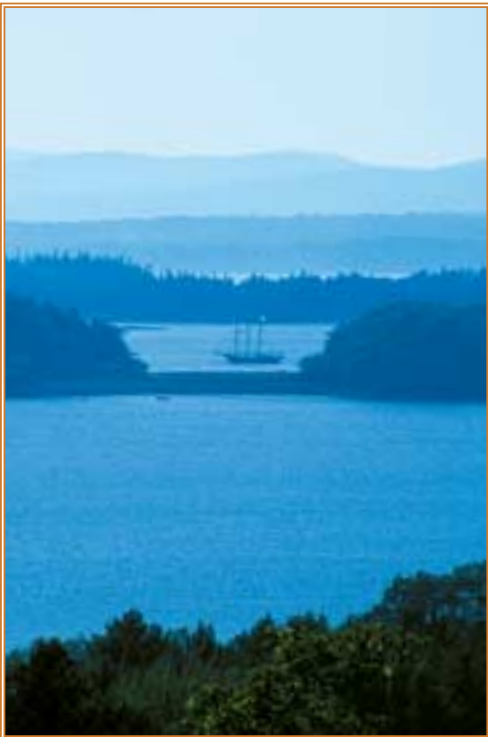
On the cover:
George Van Hook, "Island Hilltop"
30" x 36" oil on linen, 2002
North Haven, Penobscot Bay



Maine Coast Heritage Trust

2002

Annual Report



CHRIS HAMILTON

PRESIDENT'S AND CHAIRMAN'S MESSAGE

At a time when Maine and the rest of the nation face budget shortfalls and economic uncertainty, one asset remains more valuable than ever — our priceless coastline. The market for waterfront properties remains strong, and the problem facing realtors in the recent economic downturn is not lack of buyers but “lack of inventory,” not enough land to meet the high demand.

Aging baby boomers are seeking out coastal retreats as they look toward retirement. Telecommuters are escaping to Maine, enjoying its natural amenities without losing access to clients. Investors are finding that shorefront property in Maine is a “safe haven,” a sound investment in uncertain times. Those who come from more populous areas with higher property values often see land here — even at today’s prices — as a veritable bargain.

While the real estate market typically goes in cycles, coastal properties appear increasingly immune to downswings. If recent history is our guide, shorefront properties may hit price plateaus but their value rarely drops appreciably — even in a soft economy.



CHRIS HAMILTON

Powerful demographic trends are driving increased development along Maine’s coast, raising the cost of land protection work.

The juxtaposition of strong property values and a weak economy makes land conservation challenging. Thanks in large part to its Campaign for the Coast, the Trust is rising



PETER AINSWORTH

MCHT's Campaign for the Coast has helped the Trust to secure many significant landmarks such as Whaleboat Island in Casco Bay.

to meet these challenges — moving quickly to protect threatened properties and forging effective partnerships to secure key lands. We are working to ensure that the public can enjoy the natural assets of Maine without losing our shared legacy, parcel by parcel, to the highest bidder.

Even in the current slowdown, the Campaign continues to build momentum. It is generating vital funds for land acquisition and simultaneously broadening community support for conservation.

The Campaign was instrumental in preserving several coastal gems in 2002, and recently helped secure 875 acres on Marshall Island — the largest of the undeveloped islands along Maine's coast that remained unprotected.

Each success noted in this report traces back directly to the great generosity of our contributors and the dedication of the many landowners and partners with whom we work. We thank each and every one of you for investing in the future of Maine's incomparable coast.

Richard G. Rockefeller
Chairman

Jay Espy
President



YEAR IN REVIEW

Summary of 2002 Conservation Projects

	Projects	Acres	Shorefront Miles
<i>Gifts of conservation easements</i>	17	540.8	6.4
<i>Gifts of land</i>	4	123.3	2.3
<i>Purchases of land</i>	13	416.6	9.1
<i>Purchases of easements</i>	2	62.7	2.1
Total	36	1,143.4	19.9



CHRIS HAMILTON

With help from MCHT, Yarmouth residents were able to protect the Groves Farm, one of few remaining large tracts of open space in their town.



GULF OF MAINE

SOUTHERN COAST

1/2 Kittery

MCHT assisted the U.S. Fish and Wildlife Service in protecting two seabird nesting sites on the Isles of Shoals. The Trust helped secure a conservation easement on 43-acre Smuttynose Island and acquired 9-acre Duck Island for future transfer to the Petit Manan National Wildlife Refuge.

3 Cape Elizabeth

As an added layer of protection on its new 81-acre Robinson Woods preserve, Cape Elizabeth Land Trust granted MCHT an easement. The easement ensures that the property will remain in a natural state and be open to the public for daytime walking and skiing.

4/5 Yarmouth

MCHT helped community members preserve a scenic 64-acre farm that affords open space in an increasingly developed area. The town now owns most of the farm as a preserve, while a parcel with an historic farmhouse was restricted with a conservation easement and resold.

6 Harpswell

Working with landowners and Harpswell Heritage Land Trust, MCHT drafted a conservation easement protecting the wooded character of a 58-acre peninsula on Birch Island. The property, visible from nearby Mere Point and Lookout Point, includes nearly a mile of shoreline.



RICH KNOX

An easement protecting 58 acres on Birch Island limits future construction to a 2-acre building envelope.

7 Harpswell

Harpswell Heritage Land Trust donated a conservation easement to MCHT covering 93 acres of woodlands and wetlands bordering Route 24 and Long Reach. The easement restricts all future residential and commercial uses, providing additional protection for the property's wildlife habitat and rare plants.

8 Harpswell

Campaign for the Coast funds and the support of local community members helped MCHT protect 125-acre Whaleboat Island, which has long been a popular destination for boaters and picnickers. The former landowners offered the island for less than the full asking price, and critical funds to secure its purchase came from the Land for Maine's Future Program.

9 Westport

MCHT assisted a landowner who sought to strengthen the existing protection on his saltwater farm, which was first placed under easement by his father in 1989. The second easement tightens restrictions on development, further enhancing the scenic and ecological values of the Knubble Bay property.

10 Wiscasset

A flourishing blue heron rookery on a 6-acre island in Montsweag Bay is now protected, thanks to landowners willing to sell well below the market price. MCHT worked with The Chewonki Foundation on this project, part of an ongoing effort to protect wildlife habitat in the Lower Kennebec River estuary.

11 Newcastle

Sheepscot Valley Conservation Association gave MCHT a conservation easement that affords an added layer of protection on 134 acres of tidal wetland and forested upland. The easement helps ensure that newly acquired Guptil Island will always be managed as a natural preserve accessible to the public.



CHRIS HAMILTON

MCHT's new Whaleboat Island Preserve will allow people to continue a popular tradition of exploring and picnicking there.

12 St. George

With support from MCHT's Revolving Loan Fund, Georges River Land Trust acquired Tommy's Island — a small, undeveloped island in Long Cove. The new island preserve is a popular picnicking site.

13 Lincolnville

MCHT's Campaign for the Coast helped Coastal Mountains Land Trust acquire a wooded, 10-acre property that will become part of its Ducktrap River Preserve. With support from MCHT and other Ducktrap Coalition members, Coastal Mountains has protected more than 82 percent of the frontage along this Atlantic salmon river.



© DENNIS SHULTZ

MCHT supported the purchase of a tract that will expand Coastal Mountains Land Trust's Ducktrap River Preserve, part of an ongoing effort to protect the river's watershed.

14 Stockton Springs

A generous donation to the State Bureau of Parks and Lands will add 3.3 wooded acres and a small beach to Sandy Point State Park. MCHT helped facilitate the transfer.



CHRIS HAMILTON

An easement on North Haven will preserve the scenic views enjoyed from one of the island's primary roads.

15 North Haven

Owners of a 26-acre parcel with sweeping views to Pulpit Harbor and Southern Harbor donated an easement that will protect the land's traditional views and agricultural character. They gave the easement to North Haven Conservation Partners, naming MCHT as the backup holder.

16 North Haven

An easement donated to MCHT will prevent development and timber harvesting along the steep, wooded slopes of Minister's Creek. The sheltered waters and wild character of this gunkhole off Pulpit Harbor draw wading birds as well as cruisers.



CHRIS HAMILTON

The shores of Minister's Creek (shown in background) are now protected with an easement that enhances the value of existing conservation lands around Pulpit Harbor.

17 Vinalhaven

Owners of a 14-acre peninsula at the mouth of Perry Creek gave an easement to Vinalhaven Land Trust (VLT), with MCHT holding backup enforcement rights. Their gift is part of a comprehensive effort in which MCHT and VLT have worked with numerous landowners to preserve the unspoiled character of this remarkably undeveloped inlet.

18 Vinalhaven

An easement gift to the Vinalhaven Land Trust protects a key parcel that is part of a “whole place” initiative along The Basin. The wooded, 44-acre property provides valuable wildlife habitat and contributes to the inlet’s natural beauty.

19/20 Vinalhaven

Another “whole place” on Vinalhaven benefited from two generous donations protecting the largest island in Seal Bay and Winter Harbor. The owners of Penobscot Island granted 120 acres outright to MCHT and gave an easement on 7 remaining acres, ensuring permanent protection of a natural haven at the heart of this popular cruising ground.

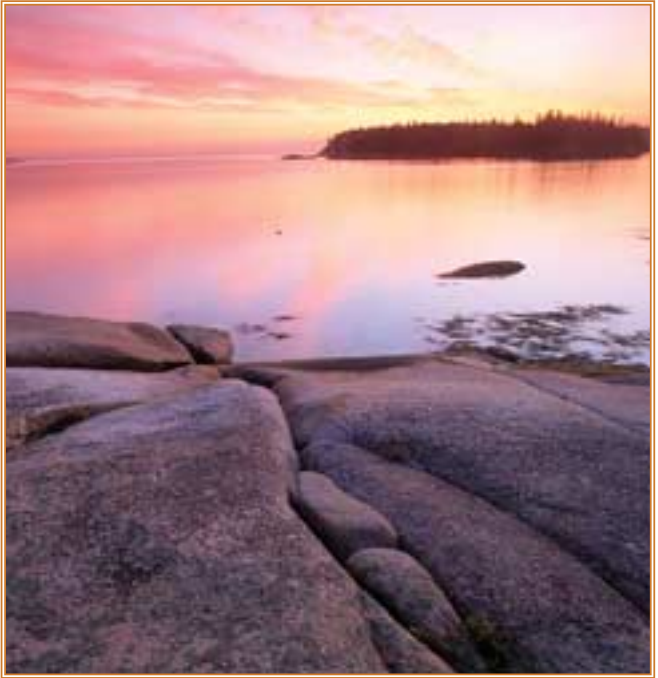


SUE VAN HOOK

A recent easement on land at the entrance to Perry Creek helps to preserve the inlet’s wild and wooded shores.

21 Penobscot

MCHT secured a conservation easement protecting the scenic and ecological values of a key parcel lying on the Bagaduce Narrows. The newly protected 20-acre parcel complements previous conservation work done in the vicinity.



© SARA GRAY

Penobscot Island, a landmark in Winter Harbor, is now fully protected.

22 Castine

Community members helped MCHT expand its Witherle Woods Preserve, adding a 19-acre parcel that will ensure continued access to trails and buffer them from possible development. The wooded property also adds to the Preserve's protected shorefrontage on Penobscot Bay.

23 Isle au Haut

MCHT acquired a 23-acre seabird nesting island off Isle au Haut for future transfer to the U.S. Fish & Wildlife Service. Little Spoon Island, which lies near several conserved properties, will become part of the Petit Manan National Wildlife Refuge.



Guillemots are one of several bird species that nest on newly conserved Little Spoon Island off Isle au Haut.

© BILL SILLIKER, JR.

ACADIA REGION

24 Swans Island

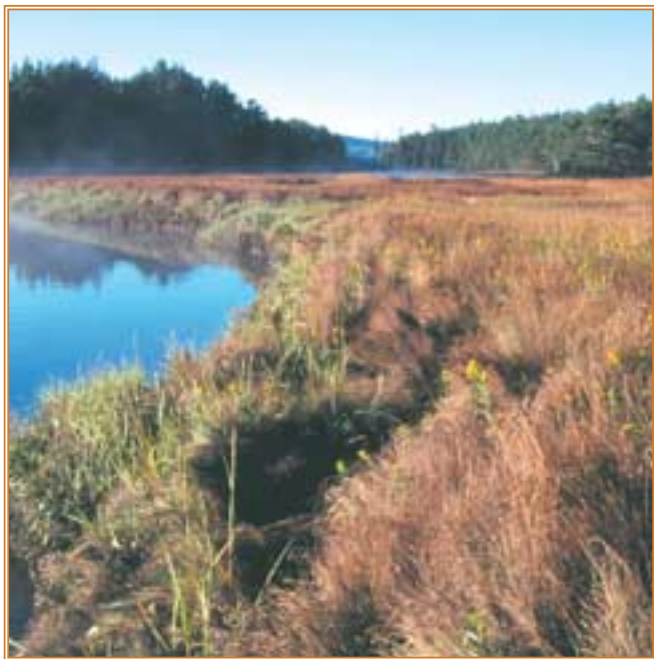
Members of an extended family granted MCHT an easement on their 58-acre wooded shoreland near Red Point. The easement, on lands that extend up the slopes of Goose Pond Mountain, will protect views from the water by strictly limiting future construction.

25/26 Swans Island

MCHT received two generous gifts from owners of a 16-acre wooded parcel along Seal Cove. A conservation easement precludes further development and allows for low-impact public access while a “remainder interest” provides for MCHT to assume title after the owners’ lifetime use.

27 Mount Desert

Conservation investors have gifted part of the Babson Creek property acquired in 2000 to MCHT for use as a permanent preserve. The public can now canoe the creek and enjoy walking and birding on open meadows that form a scenic gateway to Somesville.



CHRIS HAMILTON

Maine Coast Heritage Trust now owns a preserve along Babson Creek, helping to maintain the integrity of this tidal inlet on Mount Desert Island.

ACADIA REGION

28 Mount Desert

An easement granted to MCHT protects a wooded point on Pretty Marsh Harbor that is visible from a popular picnic area within Acadia National Park. The easement gift limits future construction on the 12-acre parcel, helping to maintain the harbor's natural character.

29 Bar Harbor

When 14-acre Black Island was listed for sale, a group of dedicated individuals acted quickly to secure its purchase and then sold the property to MCHT for less than its market value. The wooded

island supports a breeding pair of bald eagles.



© BILL SILLIKER, JR.



GARY FRIEDMAN

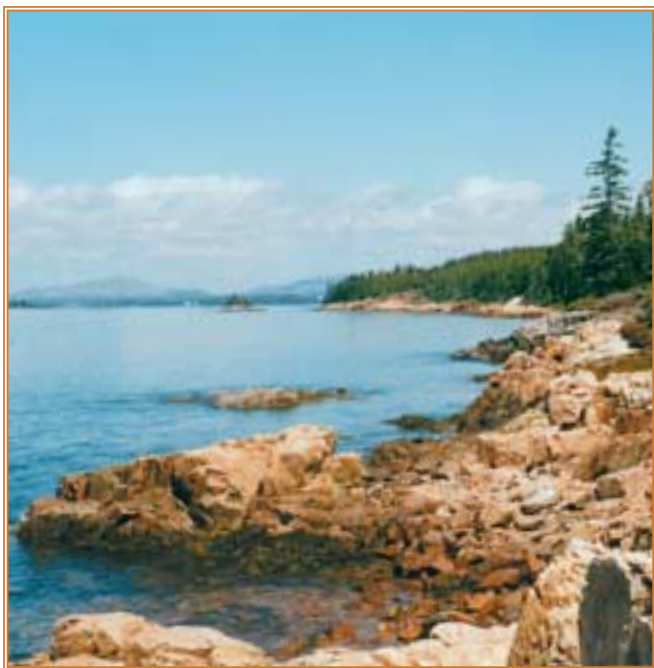
Conservation investors acquired Black Island, home to a pair of nesting eagles, and transferred the island to Maine Coast Heritage Trust for permanent protection.

30 Bar Harbor

A “forever wild” easement now protects a sensitive stretch of shorefront on Long Cove that offers habitat for bald eagles, pupping seals and terns. MCHT helped draft the easement to be held by Acadia National Park.

31 Sorrento

Owners of a forested 23-acre tract near the village donated a restrictive easement to Frenchman Bay Conservancy. MCHT helped prepare the easement, which protects views of the woodland from the water.



DAVID MACDONALD

A significant stretch of Stave Island shoreline will remain protected through a purchase negotiated by Maine Coast Heritage Trust.

32 Gouldsboro

Owners of 110 acres on Stave Island, a 528-acre island in Frenchman Bay, sold their land to MCHT for conservation at a price well below market value. The property adds nearly a mile of shore frontage to 300 acres on the north end of the island previously conserved by an easement donation to MCHT.

33 Milbridge

A bargain sale purchase enabled MCHT to protect a small, forested island in Harrington Bay, located near an active eagle nest. MCHT has transferred the property to Great Auk Land Trust for long-term stewardship.

34 Harrington

The generosity of long-time landowners enabled MCHT to purchase an eagle-nesting island at a price well below the appraised value. Bowline Head Island was then transferred to the The Chewonki Foundation, with a conservation easement donated to Great Auk Land Trust.



CHRIS HAMILTON

Maine Coast Heritage Trust assisted the town of Machiasport in the purchase of a boat launch site traditionally used by local residents.

35 Machiasport

With a Land for Maine's Future Program grant, private donations, and a partnership contribution from MCHT, the town of Machiasport acquired a cobble beach that has long served as a community boat launch. The protected beach will provide guaranteed shore access for commercial fishermen and recreational boaters.

36 Lubec

The Maine Department of Inland Fisheries and Wildlife acquired 136 acres of rolling farmland and orchards along Morong Cove that will enhance the wildlife value of its nearby Morong Point management area. MCHT negotiated the purchase and drafted proposals to secure state and federal funds for the project.



CHRIS HAMILTON

The salt marsh and uplands surrounding Morong Cove provide habitat for a rich variety of birds.

MAINE LAND TRUST NETWORK

I know of no movement as radical, as effective, and as compassionate as the land trust movement. It is like water — seeping into the most unexpected places, rising, filling the basins of the human heart.

Terry Tempest Williams
Writer and Conservation Activist

Maine has a thriving land trust community — one of the largest and most vital in the country. The achievements of local trusts here have made Maine a respected leader within the national land trust movement, which now includes more than 1,200 land trusts. Maine's land trust community has grown dramatically in the past two decades as more citizens have taken action to protect cherished landscapes.

During the development boom in the late 1980s, 42 new groups formed to pursue local land conservation in Maine. An additional 20 have begun operating since 1995, bringing the total number of Maine trusts to 95. The increased commitment to land conservation can also be seen in the expansion of existing trusts. Between 1997 and 2001, membership in Maine's land trusts increased by 20 percent to nearly 61,000 people. Local trusts made notable progress in their conservation of land, increasing their easement

holdings by 32 percent (7,568 acres) and lands owned by 84 percent (9,478 acres).

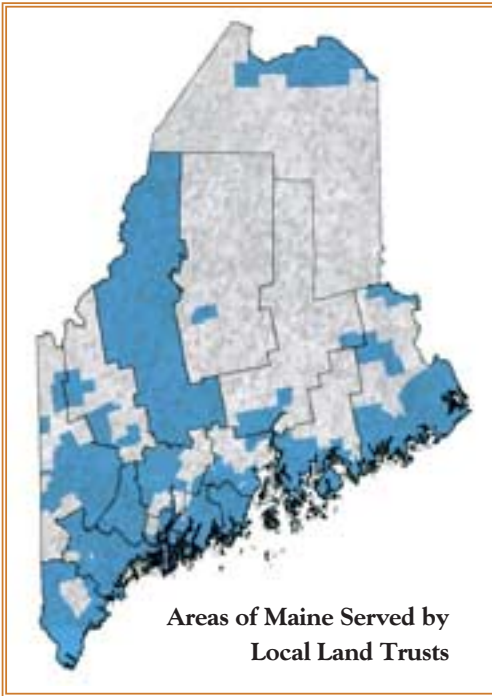
These numbers testify to the dedication of land trust volunteers and staff around the state who are working tirelessly to maintain the integrity of their communities.



TIM GLIDDEN

MCHT's annual Maine Land Conservation Conference brings together the conservation community.

MAINE LAND TRUST NETWORK



The blue shading demonstrates how local land trusts now span the length of Maine's coast, as well as many inland regions. In addition, eight organizations serve the entire state.

MCHT is expanding its coordination and communications service, the Maine Land Trust Network (MLTN), by organizing more events that bring land conservationists together. In 2002, the Network hosted regional land trust gatherings around Casco Bay and Penobscot Bay — a successful model that will be expanded in 2003 and beyond.

The growth of local trust membership was evident at the 2002 Maine Land Conservation Conference, where roughly half of the 325 participants were first-time attendees. Participants gained valuable insights at 30 workshops, as well as the plenary session, field trips, and a half-day seminar. In the fall, 60 local conservationists attended an MLTN workshop on conservation negotiations, led by Len Greenhalgh of Dartmouth's Tuck Business School.

The national Land Trust Alliance provided a second \$25,000 grant to help MLTN expand its outreach work, providing more web-based resources, establishing a conservation easement registry (see "Stewardship," page 20), and preparing educational materials. A \$15,000 grant from the Island Foundation will fund further training opportunities in 2003.

LAND HERITAGE AWARD

MCHT presented its annual Land Heritage Award to Coastal Mountains Land Trust, an exemplary regional trust based in Camden. “Coastal Mountains sets extraordinarily high goals for its work and achieves them — through strong leadership, effective outreach and great dedication,” notes Maine Land Trust Network Coordinator Megan Shore. The regional trust’s notable leadership is evident in many areas:

- *The remarkable success of the 26-member Ducktrap Coalition, whose achievements are documented in a book Coastal Mountains recently published, To Save a River;*
- *A watershed-based approach to land protection, concentrating much of its work within high-value focal regions selected by a rigorous conservation planning process;*
- *The pioneering use of Declarations of Trust, which provide a second layer of protection on preserve properties.*

“Coastal Mountains has gone from being an ordinary land trust doing good work to being an extraordinary leader, modeling how much can be accomplished at the regional level,” says MCHT President Jay Espy. “We offer this award with great admiration for the efforts of Executive Director Scott Dickerson; current and past Presidents Sarah Rheault, Steve McAllister, and Bill Zwartjes; Coastal Mountains’ dedicated staff and board members, and all the volunteers who have worked so hard to conserve the exquisite resources within the trust’s region.”



SCOTT DICKERSON

Three of the Presidents who have headed the Coastal Mountains Land Trust Board since its formation in 1986, Steve McAllister, Sarah Rheault, and Bill Zwartjes, deserve much credit for the organization’s great success.

PUBLIC POLICY

Maine Coast Heritage Trust joined the political dialogue on aquaculture siting regulations in order to ensure the scenic and natural integrity of conserved properties near proposed aquaculture operations. The Trust formally intervened in the Department of Marine Resources permitting process to oppose a proposed salmon farm roughly 670 feet from Tinker Island in Blue Hill Bay. MCHT owns a preserve on half of Tinker Island and holds an easement on the island's other half.



CHRIS HAMILTON

MCHT is concerned about the visual and auditory impacts that aquaculture could have on nearby conservation lands.

The Trust also helped draft two bills in the Maine Legislature that would modify the State's review criteria to include "shoreside" impacts of new aquaculture facilities such as noise, light and other visual impacts. In 2003, MCHT plans to conduct a study to develop measurable standards for these shoreside impacts.

Funds for the successful Land for Maine's Future Program, supported by a \$50 million public land bond in 1999, will be exhausted in 2004. MCHT began to work again with The Nature Conservancy, Trust for Public Land and other partner groups to bring another major land conservation bond before Maine voters. Planning and communications on this effort will increase significantly over the next two years.

In other arenas, the Trust contributed to the dialogue on property tax reform, worked to address the impact of all-terrain vehicles on natural preserves, and secured federal funds for conservation in Maine.

STEWARDSHIP

MCHT took on 21 new holdings in 2002, bringing its total to 60 properties and 116 easements. To better manage its growing responsibilities, the Trust has hired a mid-coast stewardship associate (based in Somesville) and a part-time stewardship assistant on Vinalhaven.



CHRIS HAMILTON

Careful stewardship planning has helped to enhance MCHT's Witherle Woods Preserve.

Staff and volunteers focused their attention on several properties during 2002. At the Witherle Woods Preserve in Castine, community members helped MCHT manage the forest to reduce fire and safety hazards and foster a greater diversity of flora and fauna. Following its acquisition of Whaleboat Island in Casco Bay, MCHT completed a breeding bird survey, natural resource inventory and use survey. The Maine Conservation Corps further enhanced its past successes at MCHT's downeast preserves, improving trails at the Hamilton Cove, Boot Head and Western Head properties. Staff workdays at Calderwood and Pond Islands helped to create new trails, clear existing trails, and expand meadows and views on these exquisite preserves.

In Summer 2002, the Trust launched a new Conservation Easement Registry to help ensure that easements are well cared for over time. Land trusts, state agencies and other easement holders can now voluntarily enroll their easements in the Registry, an informational database that MCHT will maintain. The Registry helps to provide a safety net and back-up layer of protection for easements throughout Maine.

ALDERMERE FARM

Aldermere Farm offered a diverse range of community programs in 2002 that gave area residents unprecedented opportunities to learn about and enjoy MCHT's 136-acre property in Rockport. A series of events (including workshops, guided nature walks, moonlit hikes and skis) afforded nearly 1,000 visitors a chance to learn about the property's varied ecosystems. New trails to Lily Pond and Penobscot Bay (through Spar Woods), and a network of skiing trails through the grazing fields, proved popular with local snowshoers and cross-country skiers. MCHT helped to promote sustainable agricultural practices by hosting two well-attended workshops on woodlot management and the fundamentals of marketing agricultural products.



© SARA GRAY

A collaborative effort with the local nonprofit organization Youthlinks brought in groups of young people for six weekly visits to assist with such tasks as caring for cattle and making maple syrup.

The end of the year brought further honors for the farm's famed Belted Galloway herd. Aldermere Lance and Aldermere Liza were named National Grand Champion Bull and National Grand Champion Heifer, earning Aldermere Farm the National Belted Galloway Society's Breeder of the Year award.



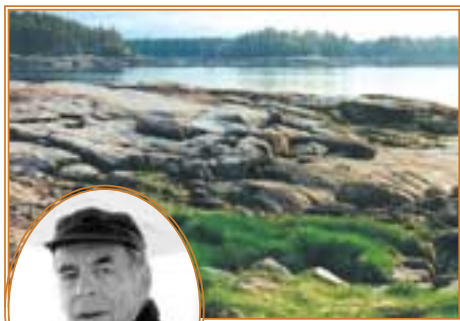
© SARA GRAY

General Manager Ron Howard prepares to show one of Aldermere's prize-winning herd.

GIFTS THROUGH TIME

We come and go, but the land is always here, and the people who love it are the people who own it, for a little while.

Willa Cather, *O Pioneers!*



Jim Wallis

Many people find a reassuring sense of permanence within the dynamic cycles of life on Maine islands. Amidst the restless tides and seasonal shifts, there is

an enduring spirit of place that touches all who care for these sea-bound lands.

Jim Wallis, a devoted friend and supporter of MCHT for decades, lived his richest hours on Round Island (off Swan's Island). "It was a place that truly reflected Jim's character and soul," Jay Espy reflects. Jim's time there — dwelling in a rustic cabin and exploring the environs by boat — prompted an abiding commitment to protect wild landscapes. He placed a conservation easement on the island and served tirelessly for years on MCHT's board. Upon his death, Jim left a generous bequest to benefit the Trust's operating endowment.



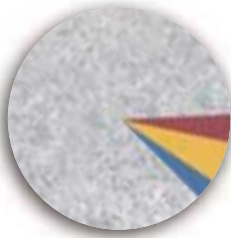
Jane Sewall, circa 1960

MCHT received a second bequest in 2002 from another dedicated island owner.

Jane Sewall spent countless hours in her youth walking and picnicking on Witch Island, which lay near her family's home in South Bristol. When the opportunity later arose to buy the island, Jane "wanted that island more than anything else in the world," her sister Kate Beaudette recalls. To preserve Witch Island and provide for the public's continued enjoyment of it, Jane Sewall eventually donated the island to Maine Audubon with an easement to Maine Coast Heritage Trust (later transferred to the Damariscotta River Association). Her bequest to support MCHT's stewardship work will help ensure that other coastal preserves are well cared for throughout time.

FINANCIAL HIGHLIGHTS

PROGRAM REVENUES	2002 Actual
Campaign Donations*	\$ 9,897,937
Unrestricted Contributions	928,310
Restricted Contributions/Grants	406,768
Investment Income used for Operations	828,974
Other Revenue	44,360
Restricted Revenue, Prior Years	163,109
Restricted Revenue, Future Years	(20,000)
Totals	\$ 12,249,458



LAND PROTECTION 86%
STEWARDSHIP 5%
PUBLIC EDUCATION AND OUTREACH 5%
FUNDRAISING 4%

PROGRAM EXPENDITURES

Land Protection 86%	\$ 4,773,952
Stewardship 5%	249,569
Public Education and Outreach 5%	285,973
Fundraising 4%	193,976
Totals	\$ 5,503,470

Net Surplus

Donor Restricted for Campaign for the Coast	\$ 6,745,988
Less outstanding commitments for land acquisitions at year end	\$ (4,717,000)
Balance - Donor Restricted for Campaign for the Coast	\$ 2,028,988

Notes on Financial Information

Maine Coast Heritage Trust is a nonprofit, tax-exempt corporation under Section 501(c)(3) of the Internal Revenue Code, a publicly supported organization as defined in Section 170(b)(1)(A)(vi) and not a private foundation under Section 509(a). Contributions are tax-deductible I.R.S. # 23-7099105.

Audited financial statements and opinion letter for 2002 were prepared by Berry, Dunn, McNeil & Parker, CPAs, Bangor, Maine. Copies available upon request.

* Under Generally Accepted Accounting Practice (GAAP) revenue includes contributions pledged but not paid as of year end. This schedule reflects actual contributions received in the year 2002. It does not include outstanding pledges or values of gifts of land.

BOARD OF DIRECTORS

Richard G. Rockefeller	<i>Chairman</i>
Peter W. Rand	<i>Vice Chairman</i>
Peter Chandler	<i>Treasurer</i>
Anne T. Bass	Elizabeth B. Johnson
Robert O. Blake	Bonnie Lounsbury
Edmund B. Cabot	Antony M. Merck
Albert M. Creighton, Jr.	Peter Quesada
Dianna Emory	Evan D. Richert
Horace A. Hildreth, Jr.	John M. Robinson
Alix W. Hopkins	Richard A. Spencer
Thomas E. Ireland	Linzee Weld
Sally C. Jacobs	Harold E. Woodsum, Jr.

COUNCIL MEMBERS

Gordon Abbott, Jr.	Francis W. Hatch
Rachel F. Armstrong	John M. Kauffmann
Elmer Beal, Jr.	Caroline Macomber
Patricia H. Blake	E. Van R. Milbury
Margaret Booth	Mary C. Rea
Thomas E. Bradbury	Laura Riley
Jasper C. Cates, Jr.	John R. Robinson
Gary C. Comer	Elizabeth A. Straus
Philip W. Conkling	George H. Taber
Philip DeNormandie	Richard J. Warren
Charles W. H. Dodge	Priscilla Williams
Anne M. Franchetti	William J. Zwartjes

FOUNDERS

Thomas D. Cabot (1897-1995)
Margaret M. Rockefeller (1915-1996)

Maine Coast Heritage Trust

www.mcht.org



Maine Coast Heritage Trust

Jay Espy – *President*

Bonnie L. Adams
Office Manager, Somesville

Jane K. Arbuckle
Director of Stewardship

Donna H. Bissett
Administrative Assistant, Topsham

E.F. (Ned) Butler, Jr.
Project Manager

Lindsey Cadot
Development Assistant

Susan M. Connolly
Director of Administration & Finance

Eric N. Davis
Vinalhaven Stewardship Assistant

Bob DeForrest
Project Manager

R. Forrest Dillon
Stewardship Associate

Christina Epperson
Land Protection Assistant

Melanie A. Farrington
Land Protection Assistant

Chris Fichtel
Project Manager

Betsy Ham
Project Manager

Christopher C. Hamilton
Senior Policy Coordinator

Megan Shane Hellstedt
Project Manager

Jesse Jacobs
GIS/Technical Resources Associate

Christie J. Kelley
Office Manager, Topsham

Richard M. Knox
Director of Communications

Jonathan M. Labaree
Campaign Director

Melissa J. Lee
Downeast Stewardship Assistant

David R. MacDonald
Director of Land Protection

Daniel F. Mahoney, III
Finance Associate

Charleen Montz
Development Assistant

Karin Marchetti Ponte
General Counsel and Clerk

Megan D. Shore
*Maine Land Trust Network
Coordinator*

Martha F. Sterling-Golden
Development Associate

Terry Towne
Stewardship Associate

Ciona Ulbrich
Project Manager

Patrick B. Watson
Project Manager

Warren Whitney
Community Outreach Coordinator

Janice K. Wingate
Director of Development

ALDERMERE FARM STAFF

Robert W. Blanchard
Farm Worker

Dwight A. Howard
Farm Manager

Nancy M. Howard
Secretary

Ronald Howard
General Manager

Travis C. Vincent
Farm Worker

Andy Weaber
Herdsmen

Kaye Weaber
Farm Assistant

